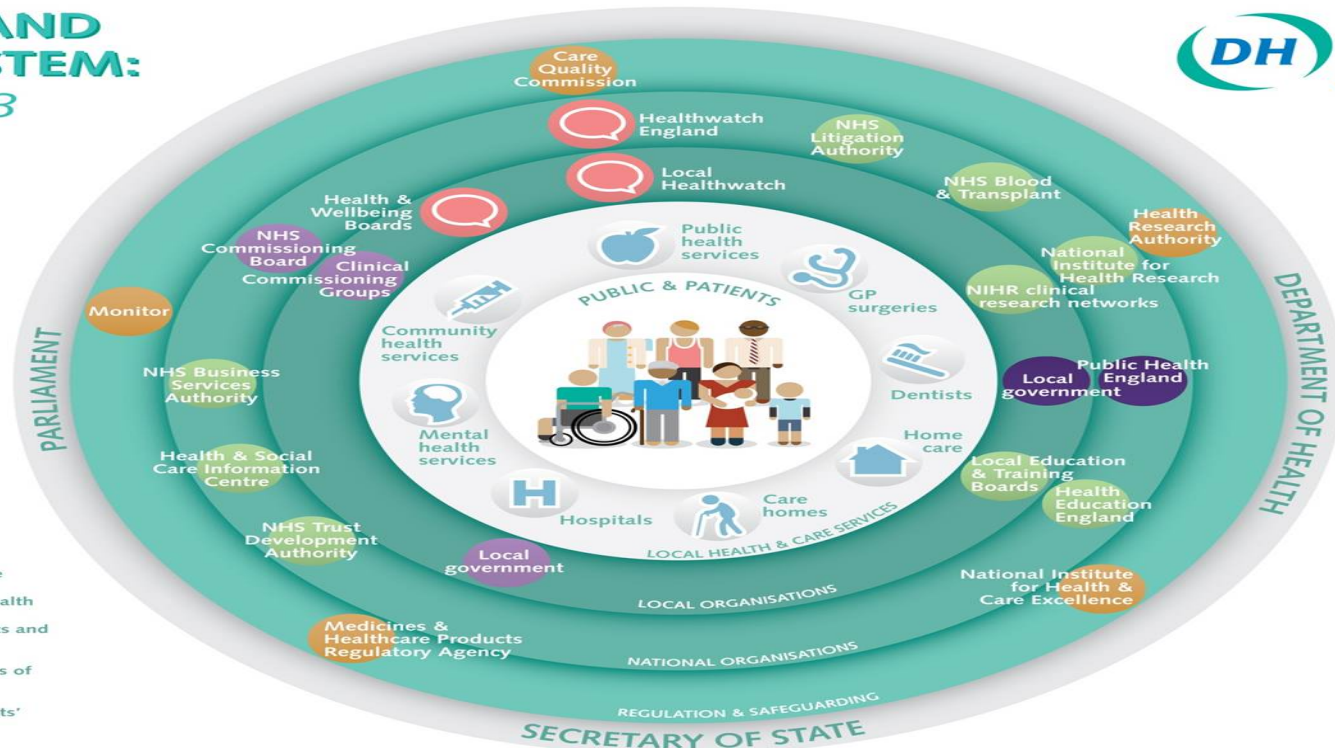


# Health and Social Care taster session – Miss Hall-Stride & Mrs Ludlam

**HEALTH AND  
CARE SYSTEM:**  
*April 2013*



# Key changes

## Previous qualification

- Applied A Level Health and Social Care (OCR)
- Department for Education announced that this will not be developed.
- Ofqual have reformed A Levels



## New qualification

### **(A Level equivalent)**

- Level 3 Cambridge Technical Extended Certificate in Health and Social Care (OCR)
- Designed to meet the Department for Education's characteristics for an Applied General qualification.

# Structure of the year

## Year 1 – 3 units

- Unit 1 Building positive relationships in health and social care (M) - coursework
- Unit 2 Equality, diversity and rights in health and social care (M) - exam
- Unit 3 Health, safety and security in health and social care (M) - exam

## Year 2 – 3 units

- Unit 4 Anatomy and physiology for health and social care (M) – exam


### **2 coursework units:**

- Unit 10 Nutrition for health
- Unit 13 Sexual health, reproduction and the early development stages

# UCAS Points are the same

- Students completing this qualification will achieve the following:

Grading	Equivalent grade	UCAS
Distinction* (A Level)	A*	56
Distinction	A	48
Merit	C	32
Pass	E	16



**A-Levels and Higher:**  
Ucas Points

	A-levels	AS levels	Scottish Highers	Advanced Highers
<b>A*</b>	56			
<b>A</b>	48	20	33	56
<b>B</b>	40	16	27	48
<b>C</b>	32	12	21	40
<b>D</b>	24	10	15	32
<b>E</b>	16	6		

**Which? University**

# Teaching split

LHS	BL
Unit 2 Equality, diversity and rights in health and social care (M) - exam	Unit 1 Building positive relationships in health and social care (M) - coursework
Unit 3 Health, safety and security in health and social care (M) - exam	

# Work experience



If you do want to enter into a career within health and social care we would advise that you secure some work experience.

Schools – ideally year R

Nurseries

Care homes

GPs

Hospitals – can be more difficult

# Early development – Motor skills (Unit 13)

## Motor skills

- **Fine motor skills** – involve hands and fingers and require coordinated movements.
- **Gross motor skills** – involve large muscle skills, walking, crawling, climbing and throwing.



## Task – Research this

Between the ages of 0-12 months what fine and gross motor skills would you expect a baby to have?

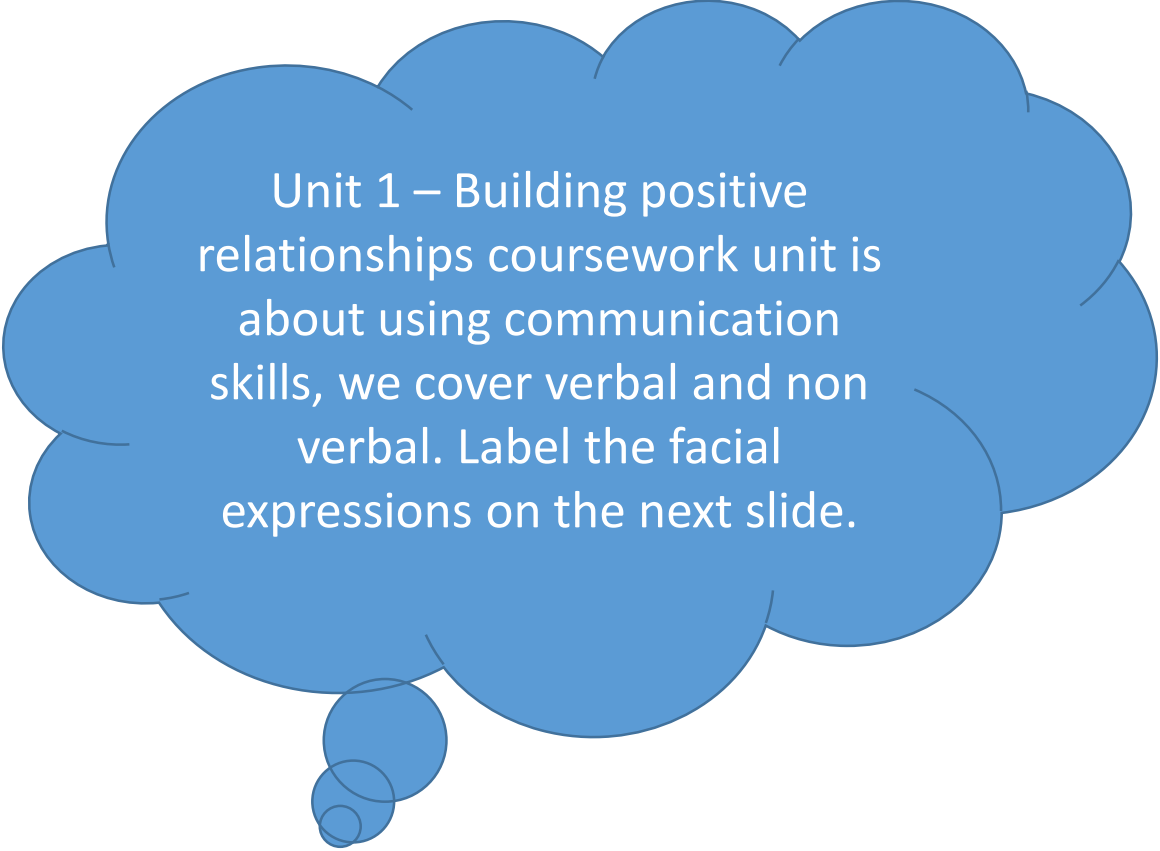
0-3

3-6

9-12

12 months

# Task



Unit 1 – Building positive relationships coursework unit is about using communication skills, we cover verbal and non verbal. Label the facial expressions on the next slide.





# Unit 3 Health and Safety unit - What is wrong with these pictures?



# Unit 2 Equality, diversity and rights in health and social care

## **Care values**

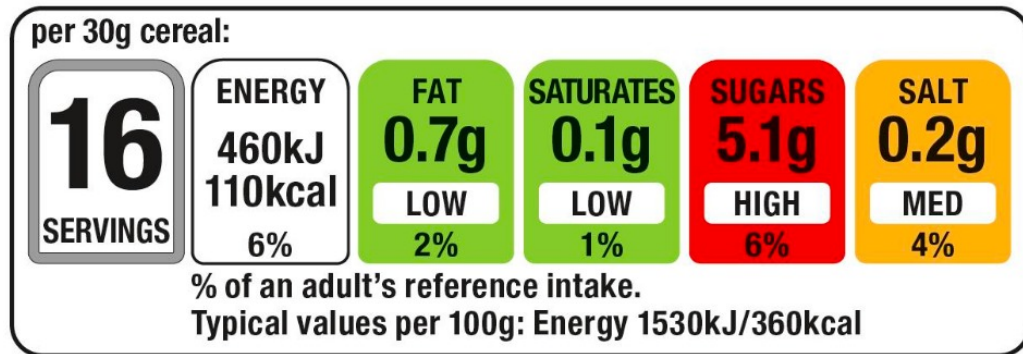
**Promoting** equality and diversity

**Promoting** individual rights and beliefs

**Maintaining** confidentiality

Can you explain what each care value means? Try to link to care settings.

# Food labels and sugar



- World Health Organisation recommends no more than 30g per day.
- There are 4 grams to a teaspoon, so around 7 per day.
- What does this food label suggest?



# Food labels and sugar

- 35g in a 330ml of full fat coke



# Task - Guess how many calories are in each meal?

## Meal One

- Big Mac Meal with medium fries and a medium coke.



# Meal Two

- Subway Meatball Marinara with cheese and salad.



# Meal Three

- KFC Twister, medium fries, coleslaw and a coke.





# Meal Four

- Dominoes Large Sizzler Pizza



# Meal Five

- Chinese chicken balls with sweet and sour sauce, egg fried rice, prawn crackers.



# Calorie quiz - Answers

- 1. 1170
- 2. 435
- 3. 1280
- 4. 2710
- 5. 2400

# Unit 10 - Task

- Briefly describe a bad diet for someone. Create a diet plan for this person and cover 2-3 days of food.

